

St449.15.1



sumtone

:

luís antunes pena

tracking noise #4

for three performers with dimmer, cable and electronics

luís antunes pena

tracking noise #4

for three performers with dimmer, cable and
electronics

commissioned by City of Cologne / Stadt Köln –
Kulturamt

2018

luís antunes pena
tracking noise #4
for three performers with dimmer, cable and electronics

st449.15.1

sumtone
Neckarhalde 38
D-72070 Tübingen
Germany
info@sumtone.com
www.sumtone.com

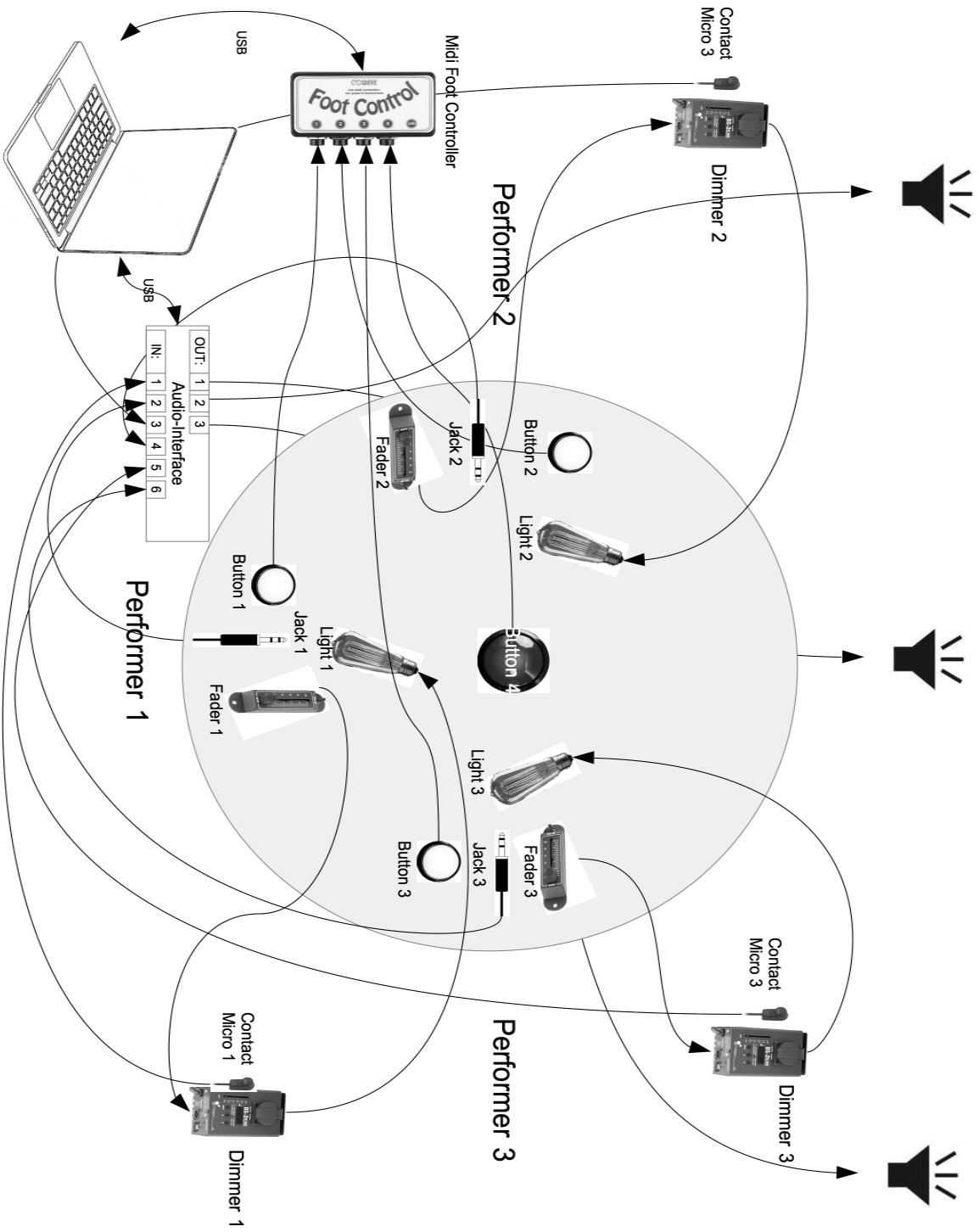
copyright © sumtone 2018
all rights reserved

programme note

Die Reihe "Tracking Noise" verfolgt die Idee, klangliche und semantische Räume zwischen Rauschen und Musik zu erkunden. Die Widersprüche und Utopien einer Noise-Musik sind das Spekulationsfeld der Komposition.

Das Instrumentarium des Stückes beschränkt sich auf simple Elemente: ein Licht-Dimmer, ein loses Kabel und ein Schalter. Zusätzlich befindet sich ein großer Knopf in der Mitte des Tisches. Mit diesem beschränkten Instrumentarium steuern die Performer den Zeitablauf und rufen das Imaginarium eines Tisch-Spieles hervor.

setup



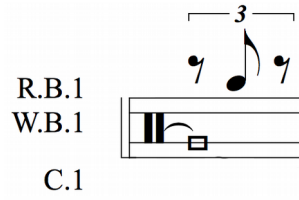
notation:

cable (mono jack 3.5 mm)



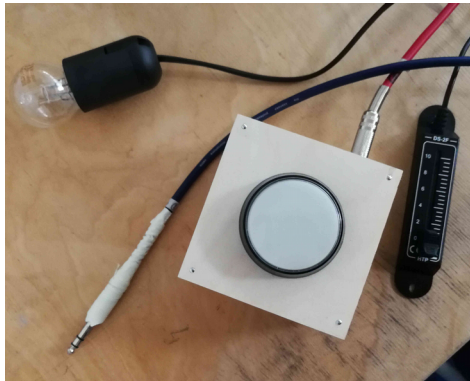
hand movement over the light bulb

(when you are holding the jack cable and light is on, approximating your hand to the light bulb with produce a subtle amplitude modulation)

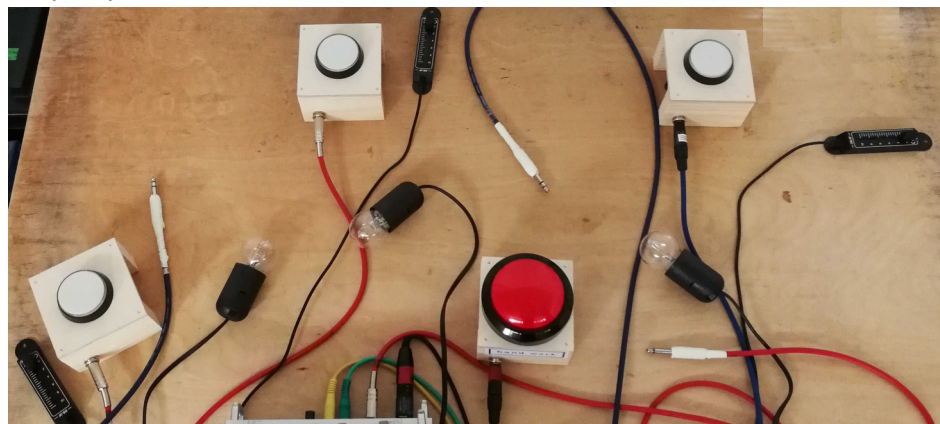


instruments:

setup each performer:



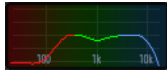
setup all performers:



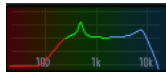
settings mixer
(example of the main settings)

equalizer:

dimmer 1



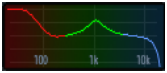
dimmer 2



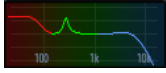
dimmer 3



cable 1



cable 2



cable 3

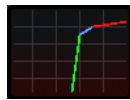


compressor:

dimmer 1 – 3



cable 1 - 3



Tracking Noise #4

Vermalung - VI

Luis Antunes Pena

♩ = 60

Dimmer 1

Red Button 1

White Button 1

Cable 1

Red Button 2

White Button 2

Cable 2

Dimmer 3

Red Button 3

White Button 3

Cable 3

mf

f

f

p

f



00:00:16

5

Di. 1

R.B.1

W.B.1

C.1

Di. 2

R.B.2

W.B.2

C.2

Di. 3

R.B.3

W.B.3

C.3

f

Tracking Noise #4

00:00:28

8

Di. 1

R.B.1

W.B.1

C.1

Di. 2

R.B.2

W.B.2

C.2

Di. 3

R.B.3

W.B.3

C.3

00:00:40

11

Di. 1

R.B.1

W.B.1

C.1

Di. 2

R.B.2

W.B.2

C.2

Di. 3

R.B.3

W.B.3

C.3

00:00:52

14

Di. 1

R.B.1
W.B.1

C.1

14 15 16 17

move one hand over the light bulb

Di. 2

R.B.2
W.B.2

C.2

5

move one hand over the light bulb

Di. 3

R.B.3
W.B.3

C.3

3 3 3

move one hand over the light bulb

00:01:08

18

Di. 1

R.B.1
W.B.1

C.1

3 3 19 20 21

Di. 2

R.B.2
W.B.2

C.2

3 3 6

Di. 3

R.B.3
W.B.3

C.3

5 3 5

Tracking Noise #4

00:01:24
22

Di. 1

R.B.1

W.B.1

C.1

23

24

Di. 2

R.B.2

W.B.2

C.2

Di. 3

R.B.3

W.B.3

C.3



00:01:36
25

(eventually by 100% sound disappears but light remains on)

Di. 1

R.B.1

W.B.1

C.1

Di. 2

R.B.2

W.B.2

C.2

(eventually by 100% sound disappears but light remains on)

Di. 3

R.B.3

W.B.3

C.3

00:01:52
29

30 31 32

Di. 1
R.B.1
W.B.1
C.1
Di. 2
R.B.2
W.B.2
C.2
Di. 3
R.B.3
W.B.3
C.3

00:02:08
33

Di. 1
R.B.1
W.B.1
C.1
Di. 2
R.B.2
W.B.2
C.2
Di. 3
R.B.3
W.B.3
C.3

Tracking Noise #4

00:02:12

34

R.B.1
W.B.1
C.1

R.B.2
W.B.2
C.2

Di. 3

R.B.3
W.B.3
C.3

00:02:17

35

Di. 1

Di. 2

Di. 3

00:02:37
40

A P01 P02 P03 P04 P05 P06

Di. 1

R.B.1

W.B.1

C.1

Di. 2

R.B.2

W.B.2

C.2

Di. 3

R.B.3

W.B.3

C.3

00:02:58
45

P07 P08 P09

Di. 1

R.B.1

W.B.1

C.1

Di. 2

R.B.2

W.B.2

C.2

Di. 3

R.B.3

W.B.3

C.3

Tracking Noise #4

B

P10

P11

P12

P13

P14

P15

P16

P17

P18

50 51 52

Di. 1 (play) (frz on)

R.B.1 (frz on)

W.B.1

C.1 6

Di. 2 (play) (rm off) (play) (frz on)

R.B.2 (frz on)

W.B.2 3

C.2

Di. 3 (play) (rm on) (rm off) (frz off)

R.B.3 (frz off)

W.B.3 (play)

C.3 5



00:03:30
53

P19

P20

C

P21

P22

P23

P24

P25

P26

P27

P28

55

Di. 1 (frz off) (frz on) (frz on) (frz off)

R.B.1 (frz off) (frz on) (frz on) (frz off)

W.B.1 3 3 5 3

C.1

Di. 2 (frz off) (frz off) (frz off)

R.B.2 (frz off)

W.B.2 3 5

C.2 3

Di. 3 (frz on) (frz on) (frz on)

R.B.3 (frz on) (frz on)

W.B.3 3 5

C.3 5

00:03:42
56

P30 P31

P32 P33 P34

P35 P36

P37 P38

P39 P40 P41

P42

P43

P44

57

58

Di. 1

R.B.1 (frz on) (frz off)

W.B.1

C.1

Di. 2

R.B.2 (frz off) (frz off) (frz on) (frz on)

W.B.2 (frz off) (rm on) (frz on)

C.2

Di. 3

R.B.3 (frz on) (frz off) (rm on) (frz on)

W.B.3 (frz on) (frz on)

C.3



D

P45 P46

P47 P48 P49

P50 P51 P52 P53 P54 P55 P56

P57

P58 P59 P60

60

61

Di. 1

R.B.1 (rm on) (frz on) (frz on)

W.B.1

C.1

Di. 2

R.B.2 (frz off) (frz off) (frz on) (frz on) (frz on) (frz on)

W.B.2 (frz off)

C.2

Di. 3

R.B.3 (frz off) (frz off) (rm off) (frz off)

W.B.3

C.3

Tracking Noise #4

P61

00:04:06
62

P62 P63

P64

P65 P66

P67 P68

P69

E

P70 P71

P72 P73

Di. 1

(frz off) (frz on)

R.B.1

W.B.1

C.1

Di. 2

(frz off) (frz on) (frz off) (frz off) (frz on)

R.B.2

W.B.2

C.2

Di. 3

(frz off) (frz on) (frz off) (frz off)

R.B.3

W.B.3

C.3



P74

00:04:18
65

P75 P76

P77

P78 P79

P80 P81

P82 P83

Di. 1

(frz on)

R.B.1

W.B.1

C.1

Di. 2

(frz on) (frz off) (frz off) (frz on)

R.B.2

W.B.2

C.2

Di. 3

(frz off) (frz on) (frz off) (frz off)

R.B.3

W.B.3

C.3

Tracking Noise #4

F

00:04:34
69

P84 P85 P86 P87 P88 P89 P90 P91 P92 P93 P94 P95 P96 P97

Di. 1
R.B.1
W.B.1
C.1

Di. 2
R.B.2
W.B.2
C.2

Di. 3
R.B.3
W.B.3
C.3

(frz on) (frz off) (frz off) (frz on) (frz on)

(frz off) (frz on) (frz on)

(frz on) (frz on) (frz off) (frz off)(frz off)

6 6 5

6 3 5

5 3



(Solo Tape 78 sec)
00:04:54
74

G P98 P99 P100 P101 P102 P103 P104

Di. 1
R.B.1
W.B.1
C.1

Di. 2
R.B.2
W.B.2
C.2

Di. 3
R.B.3
W.B.3
C.3

15 89 91 92

(Solo Tape 78 sec)

(Solo Tape 78 sec)

(Solo Tape 78 sec)

(play) (play) (play)

(stop) (play) (play)

(play) (play)

Di. 1

(play) (play)

R.B.1

W.B.1

C.1

Di. 2

(play) (play)

R.B.2

W.B.2

C.2

Di. 3

(play)

R.B.3

W.B.3

C.3

00:06:22

96

R.B.1

W.B.1

C.1

R.B.2

W.B.2

C.2

R.B.3

W.B.3

C.3

00:06:30

98

R.B.1

W.B.1

C.1

R.B.2

W.B.2

C.2

R.B.3

W.B.3

C.3

I

R.B.1
W.B.1
C.1

R.B.2
W.B.2
C.2

R.B.3
W.B.3
C.3



00:06:46
102

J P110 P111 P112 P113 P114 P115

Di. 1

R.B.1
W.B.1
C.1

Di. 2

R.B.2
W.B.2
C.2

Di. 3

R.B.3
W.B.3
C.3

Tracking Noise #4

K **P116** **P117** **P118** **P119** (slowly change randomly dimmer in range 20% - 50%)

107 108 109 110 111 112 113

Di. 1
R.B.1
W.B.1
C.1

(play)

(slowly change randomly dimmer in range 20% - 50%)

Di. 2
R.B.2
W.B.2
C.2

(play)

(slowly change randomly dimmer in range 20% - 50%)

Di. 3
R.B.3
W.B.3
C.3

(play) (play)



00:07:34 (wait until the audio file completely fades out)

114 115 116

Di. 1
R.B.1
W.B.1
C.1

(wait until the audio file completely fades out)

Di. 2
R.B.2
W.B.2
C.2

(wait until the audio file completely fades out)

Di. 3
R.B.3
W.B.3
C.3